



## PORTABELLO

ONE STORY  
3 BEDROOMS  
2.5 BATHS  
STUDY  
4 CAR GARAGE  
BONUS ROOM

2,922 SQ. FT. A/C  
+ 1,600 SQ. FT. BONUS  

---

4,522 POTENTIAL  
TOTAL SQ. FT.

## ELEVATION



*\*We reserve the right to make changes to our floor plans, specifications, dimensions, designs and elevations without prior notice. Stated dimensions and square footage are estimated and should not be used as representation of the home's actual size or net useable square footage which may be less than the estimated square footage. Please see your Community Sales Manager for more information.*



## PORTABELLO

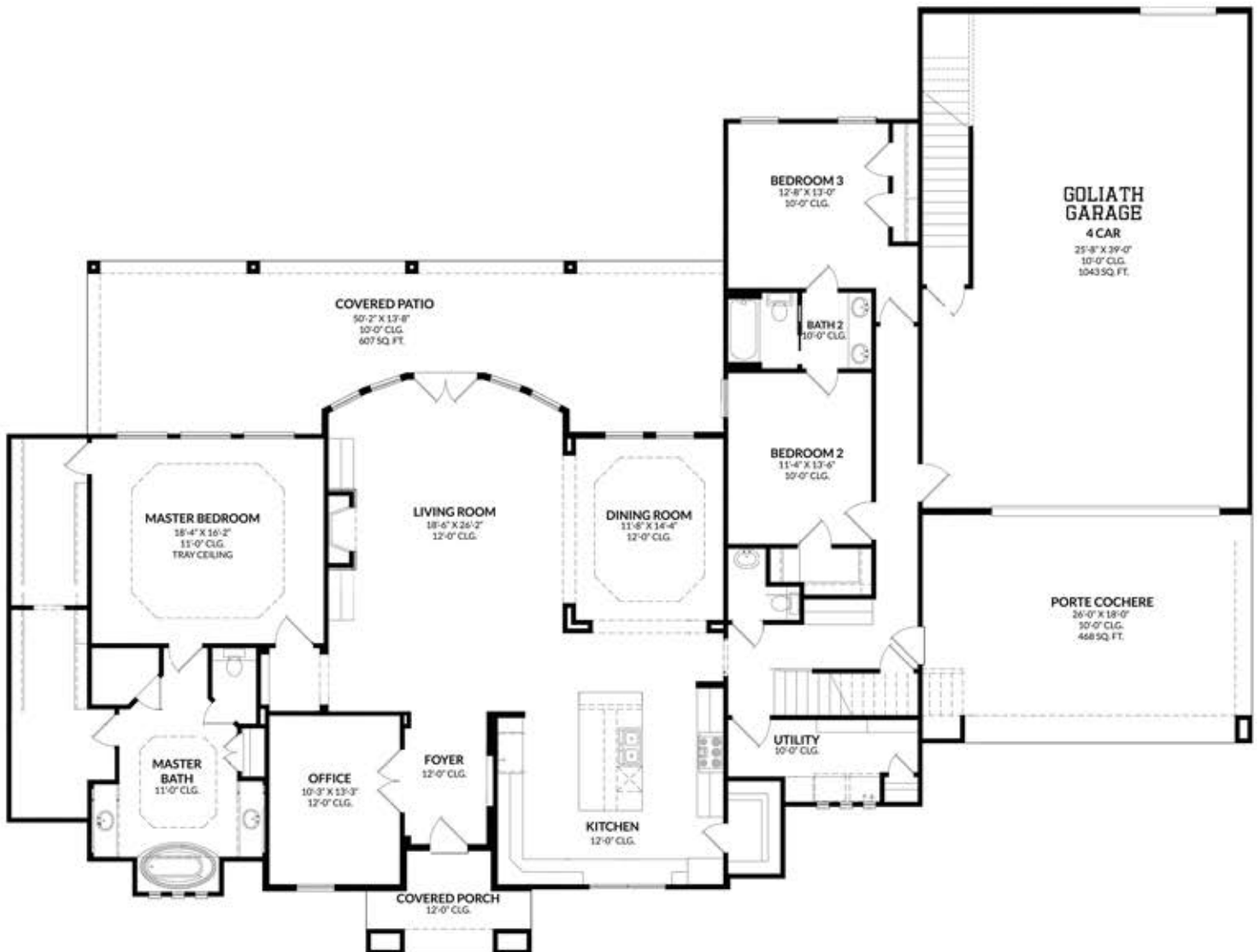
ONE STORY  
3 BEDROOMS  
2.5 BATHS  
STUDY  
4 CAR GARAGE  
BONUS ROOM

2,922 SQ. FT. A/C  
+ 1,600 SQ. FT. BONUS  

---

4,522 POTENTIAL  
TOTAL SQ. FT.

## FIRST FLOOR



\*We reserve the right to make changes to our floor plans, specifications, dimensions, designs and elevations without prior notice. Stated dimensions and square footage are estimated and should not be used as representation of the home's actual size or net useable square footage which may be less than the estimated square footage. Please see your Community Sales Manager for more information.



## PORTABELLO

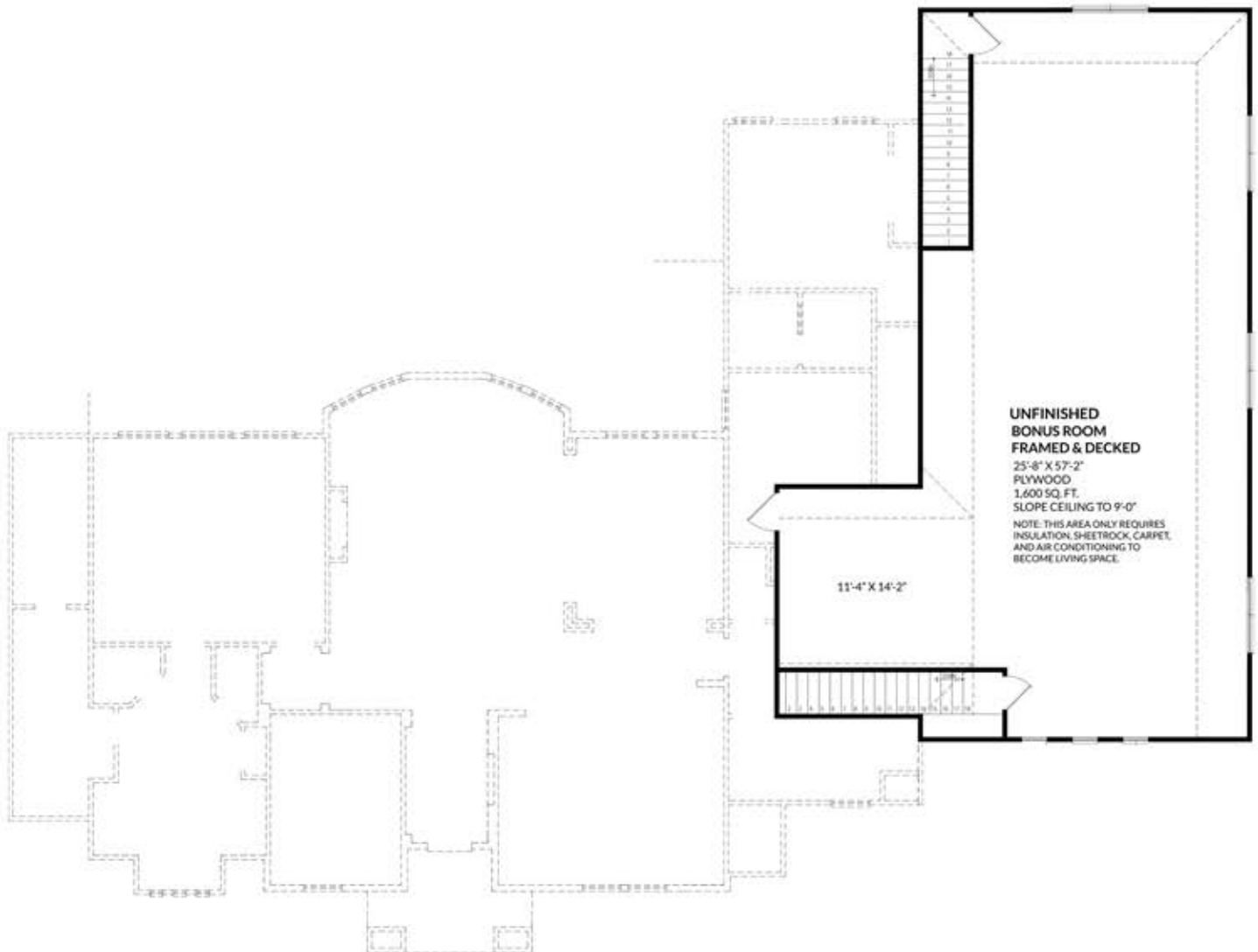
ONE STORY  
3 BEDROOMS  
2.5 BATHS  
STUDY  
4 CAR GARAGE  
BONUS ROOM

2,922 SQ. FT. A/C  
+ 1,600 SQ. FT. BONUS  

---

4,522 POTENTIAL  
TOTAL SQ. FT.

## SECOND FLOOR



*\*We reserve the right to make changes to our floor plans, specifications, dimensions, designs and elevations without prior notice. Stated dimensions and square footage are estimated and should not be used as representation of the home's actual size or net useable square footage which may be less than the estimated square footage. Please see your Community Sales Manager for more information.*